

I feel
isolated

Make it Better for

TAY

Make the process comfortable for youth.

If the following describes you, a family member or a client of yours, we can help.

- Youth aged 16 to 24 who live in Hastings-Prince Edward (serving Hastings from Belleville and Quinte West, and Prince Edward County from Picton)
- Youth who have persistent mental health (MH) and/or addiction issues, including:
 - Those who have some MH challenges who can manage on their own with support
 - Those who have serious MH issues or illness who require additional supports
- Youth who need help connecting to community services (i.e. education, employment, mental health, addictions, housing and/or recreation), including:
 - Those who need help to transition from children's services to youth or adult services
 - Those who require, but are not connected to, community supports

Support . Connect . Empower

TAY

Transitional Aged Youth

youthab
youth habilitation quinte inc.
counselling. housing. employment.

210A Front Street, Belleville, ON K8N 2Z2
t: 613 969 0830 f: 613 969 1464
www.youthab.ca

Mental Health

Youthab provides a range of Mental Health Services to help you in a time of need.

- **Counselling and In School Counselling**
- **Eating Disorder Treatment**
- **Managing Anger and Assertiveness Groups**

Housing

Youthab provides safe, affordable and supportive housing to TAY. We can help you find a place to live.

- **The Transition Home**
- **Co-Operative Housing**

For individuals of all ages who are seeking independent housing, visit the Hastings Housing Resource Centre.

www.hastingshousing.com

Employment

Youthab provides a range of employment services to help you find work such as employment counselling, readiness training and job placement.

- **Summer Jobs Service, Summer Jobs For Youth**
- **Career Edge Services**

Support . Connect . Empower

TAY

Transitional Aged Youth

I still need
to talk to
someone.

Where do
I go now?

Serving Hastings-Prince Edward

youthab
youth habilitation quinte inc.
counselling. housing. employment.

 **Ontario**
South East Local Health
Integration Network
Réseau local d'intégration
des services de santé
du Sud-Est

I'm
struggling

Help for TAY

Transitional Aged Youth

Why Transition Services?

Services for children end at age 18 and services for adults begin at age 16, making it necessary for youth to move from one agency to another to continue receiving mental health services.

Some youth require services but have not connected with community supports.

Our Mission

To support youth holistically, connecting them to appropriate ongoing services and enhancing their skills toward independence.

Our Goal

To provide support and stability to youth during the transition process and assist them with their emotional well-being and day-to-day activities.

Contact

To make a referral or for more info, please contact:
Transitional Connector
Youth Habilitation Quinte Inc.

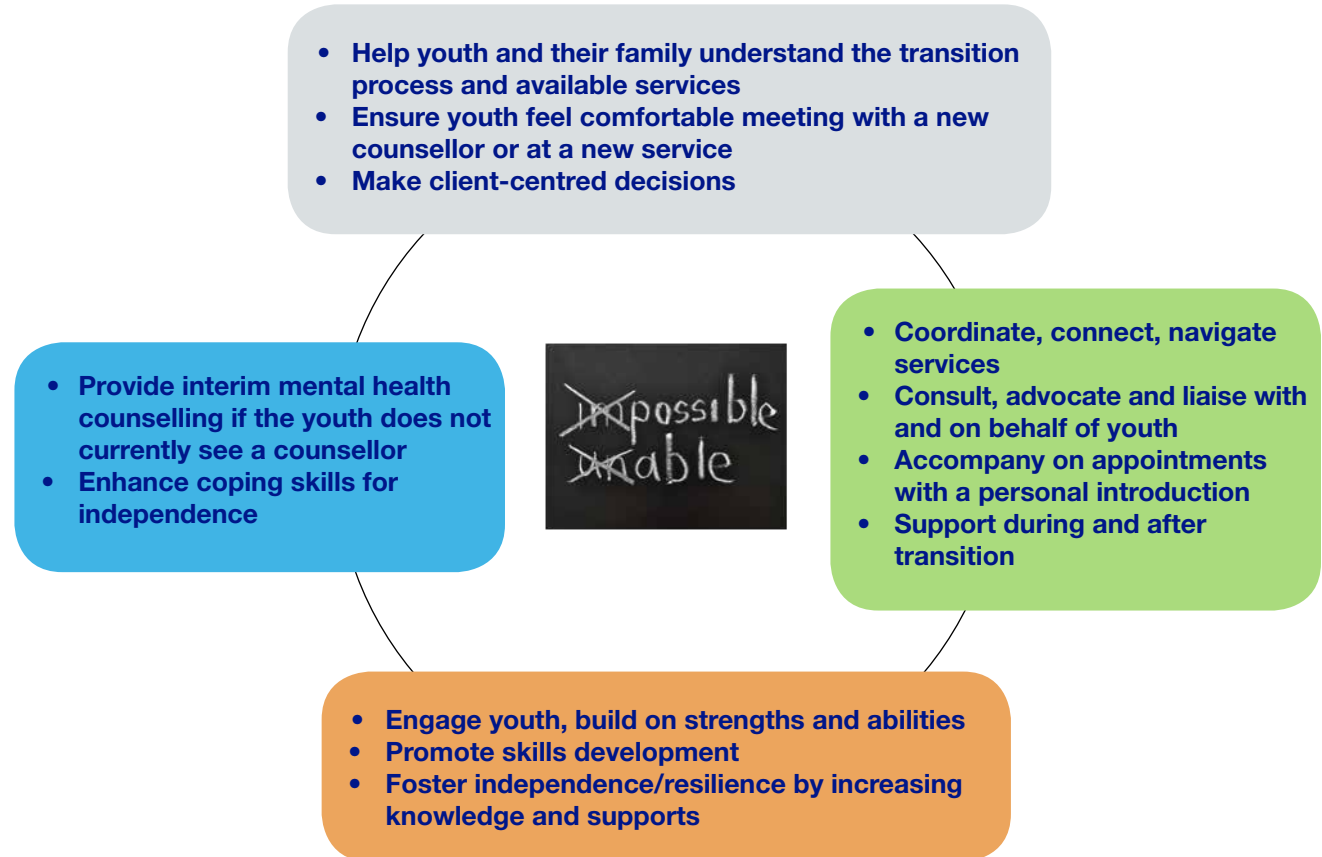
p: 613 969 0830
f: 613 969 1464
text: 613 827 2845
e: tay@youthab.ca



How We Can Help TAY

Support . Connect . Empower

The **Transitional Connector** collaborates with youth aged 16 to 24, their family, and service and care providers to:



The **Transitional Connector** coordinates transitions and services for mental health and addictions, education, employment, living situation, and daily activities to improve the emotional well-being of youth.